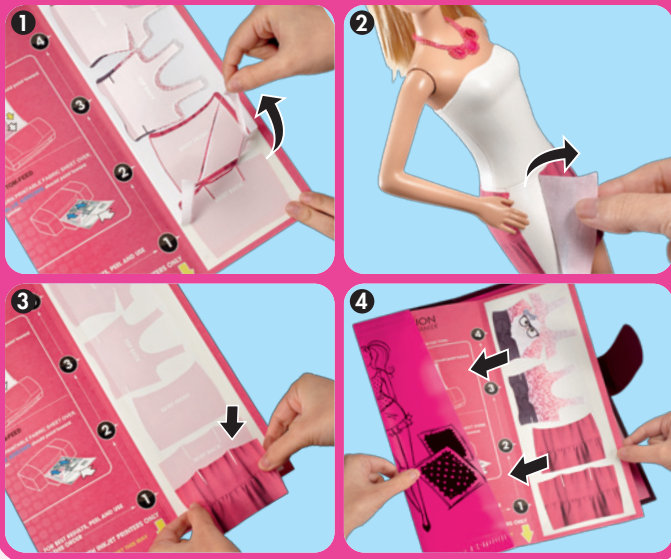


## Storage and Display

Store and display your printed fashions for re-use in your portfolio.

1. After all fashions have been removed from printable fabric sheet, peel away remaining fabric.
2. Remove printed fashion from doll in reverse order.
3. Place printed fashion on exposed backing.
4. Slide left edge of paper into portfolio tab.

Store sheets in portfolio to display your fashions.



## Warnings

- **Works with inkjet printers only.** Inkjet inks (not included) may stain fabrics and other surfaces. Avoid contact with carpet, clothing, walls and furniture. Not for use in laser printers or copiers, may cause damage.
- Do not handle fabric with wet hands and don't get printed fabric wet.
- Fashions, trims and glitter decals for doll only.
- If fabric is not stuck completely to paper do not use it in your printer. Please contact Mattel Consumer Relations.
- Printer, tablet and computer not included.

## Tips

- Fashions, trims and glitter decals can be reapplied several times. Store them flat in a cool, dry place.
- If you print on the wrong side by mistake, turn the paper over and print again.
- For fabric jams or any other printer issues, consult your printer manual or contact your printer's manufacturer.

Apple and the Apple logo are trademarks of Apple Inc., registered in the U.S and other countries.

App Store is a service mark of Apple Inc.

Google Play is a trademark of Google Inc.

Google Play est une marque de Google Inc.

### CONSUMER INFORMATION

Need Assistance? Visit [service.mattel.com](http://service.mattel.com) or call 1-800-524-9697 (US and Canada only).

SERVICE.MATTEL.COM

Mattel, Inc., 636 Girard Avenue, East Aurora, NY 14052, U.S.A. Consumer Relations 1-800-524-8697. Mattel U.K. Ltd., Vanwall Business Park, Maidenhead SL6 4UB. Helpline 01628 500303. Mattel Australia Pty., Ltd., Richmond, Victoria. 3121. Consumer Advisory Service - 1300 135 312. Mattel East Asia Ltd., Room 503-09, North Tower, World Finance Centre, Harbour City, Tsimshatsui, HK, China. Diimport & Diedarkan Oleh: Mattel SEA Ptd Ltd. (993532-P) Lot 13.5, 13th Floor, Menara Lien Hoe, Persiaran Tropicana Golf Country Resort, 47410 PJ, Malaysia. Tel: 03-78803817, Fax: 03-78803867.

Barbie

# FASHION DESIGN MAKER INSTRUCTIONS

## Contents



CCG95

## Contents



CFB94

Dolls cannot stand alone.  
Each sold separately, subject to availability.  
Colors and decorations may vary from those shown.

Please remove everything from the package and compare to the contents shown here. If any items are missing, please contact your local Mattel office. Keep these instructions for future reference as they contain important information.

## Minimum Requirements

**PC/Mac** compatible.

1 GB Ram.

Latest version of your favorite web browser.

**Tablet** compatible.




iPad (4th generation), iPad mini, iPad mini with Retina display, iPad (3rd generation), and iPad 2 with iOS 6.0 and above supported.

Android tablets with OS 4.0 and above.

Not compatible with mobile phones.

## Designing Your Fashion

### Ask a Parent for Help!

1.  For PC/Mac users, go to [www.barbie.com/fashion-design-maker](http://www.barbie.com/fashion-design-maker)
2.  For iPad users, download the Barbie Fashion Design Maker App from the App Store and launch App.
3.  For Android tablet users, download the Barbie Fashion Design Maker App from Google Play and launch App.
4. Use on-screen tools to layer colors, patterns, and details onto the digital fashion.



We reserve the right to terminate App and website after 01/15/2016

### Printing Your Fashion (Ask a Parent for Help!)

1. Remove all other paper from your printer.
2. Unfold a printable fabric sheet and load into your printer.
  - a. If your printer feeds from the top, load printable fabric sheet with fabric side facing you. Yellow arrows should point toward the printer.
  - b. If your printer feeds from the bottom, load printable fabric sheet with outside cover facing you. Blue arrows should point toward the printer.
3. Click the **print** button on screen.
4. Allow the ink to dry (drying time varies).

Top-feed

or

Bottom-feed



### Dressing Your Doll

For best results, peel and apply fashions in the order indicated on the printable fabric sheet starting with the back.

1. Peel skirt back. Apply to back of doll's plastic skirt. Use vertical centering line and waistline as guide for placement. Smooth towards bottom edge, then work outwards towards darts and edges.



2. Peel skirt front. Apply to front of doll's plastic skirt. Use vertical centering line and waistline as guide for placement. Wrap edges around so they layer on top of skirt back. Smooth down bottom edge first, then work up towards outer edges.



3. Peel top back. Apply to back of doll's plastic top. Use vertical centering line and top of plastic top as guide for placement. Smooth towards bottom edge, then work outwards towards darts and edges.



4. Peel top front. Apply to front of doll's plastic top. Use vertical centering line and top of plastic top as guide for placement. Follow the numbers below to smooth, working outwards towards darts and edges.



5. Align and layer front straps on top of back straps.



### Final Touches

Peel ribbon and glitter decals off as shown and apply.

