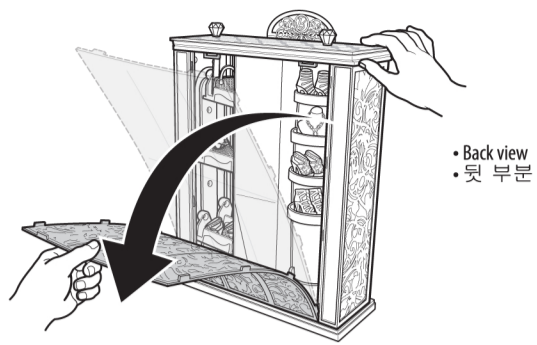


Parents note: Take accessories out as shown if they are stuck in the back of racks.  
 • 보이는 것처럼 선반 뒤편에 위치한 악세서리들을 모두 꺼내주세요.

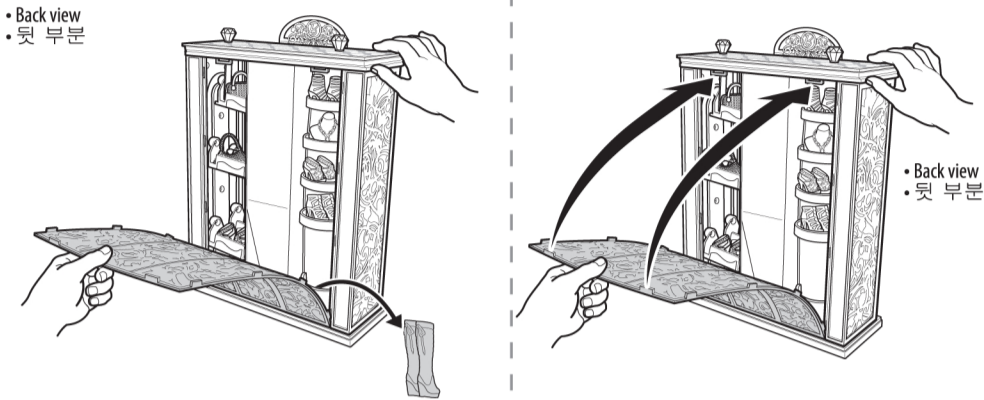
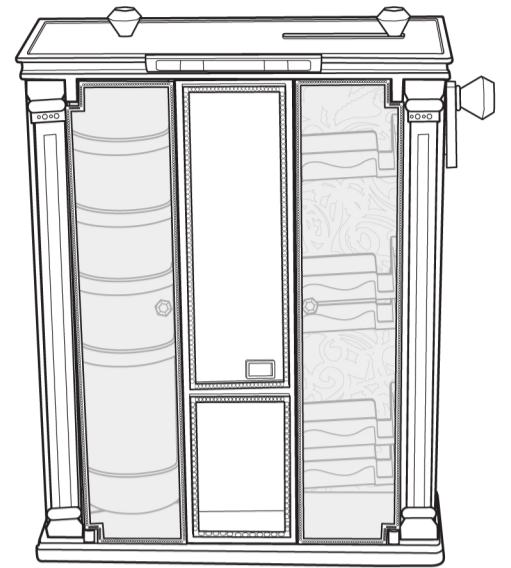
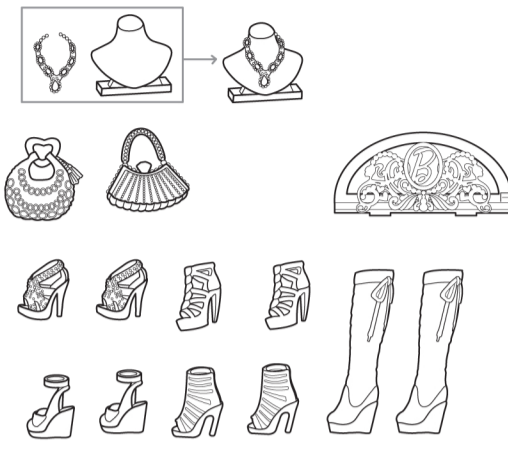


INSTRUCTIONS • 사용 설명서

3+



• Back view  
 • 뒷 부분



• Back view  
 • 뒷 부분

• Back view  
 • 뒷 부분

• Contents: Please remove everything from the package and compare to the contents shown here. If any items are missing, please contact your local Mattel office. Keep these instructions for future reference as they contain important information.  
 • 상자 안에 있는 구성품을 꺼내어 아래 그림에 있는 제품들이 모두 있는지 확인하세요. 빠진 제품이 있다면 각 지역의 마텔 오피스에 연락해주세요. 다음 사용을 위해 이 설명서를 가지고 계시면 도움이 될 것입니다.

CONSUMER INFORMATION

Need Assistance? Visit [service.mattel.com](http://service.mattel.com) or call 1-800-524-8697 (US and Canada only).

SERVICE.MATTEL.COM

Mattel, Inc., 636 Girard Avenue, East Aurora, NY 14052, U.S.A. Consumer Relations 1-800-524-8697. Mattel U.K. Ltd., Vanwall Business Park, Maidenhead SL6 4UB. Helpline 01628 500303. Mattel Australia Pty., Ltd., Richmond, Victoria. 3121. Consumer

Advisory Service - 1300 135 312. Mattel East Asia Ltd., Room 503-09, North Tower, World Finance Centre, Harbour City, Tsimshatsui, HK, China. Diimport & Diedarkan Oleh: Mattel SEA Ptd Ltd. (993532-P) Lot 13.5, 13th Floor, Menara Lien Hoe, Persiaran Tropicana Golf Country Resort, 47410 PJ, Malaysia. Tel:03-78803817, Fax:03-78803867.

WARNING:  
 CHOKING HAZARD - Small parts.  
 Not for children under 3 years.

경고  
 질식위험: 작은 부품이 들어 있으므로  
 3세 미만의 어린이가  
 삼키지 않도록 주의하세요.

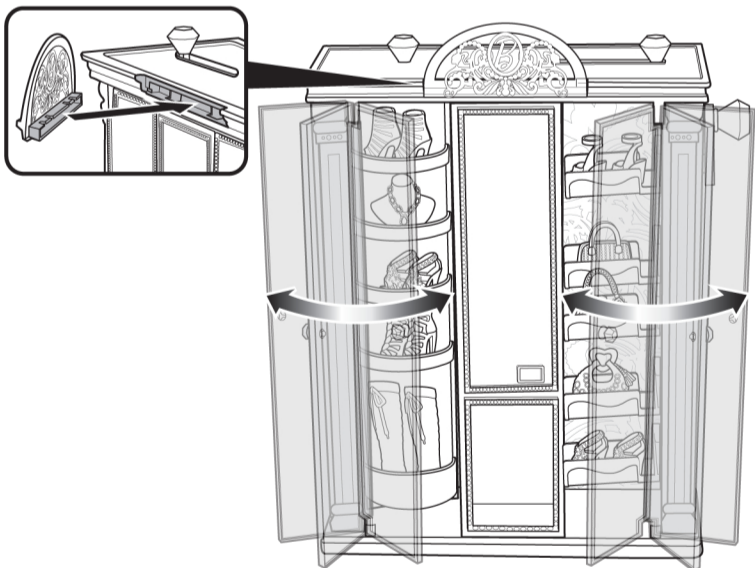


©2013 Mattel. All Rights Reserved. Tous droits réservés.

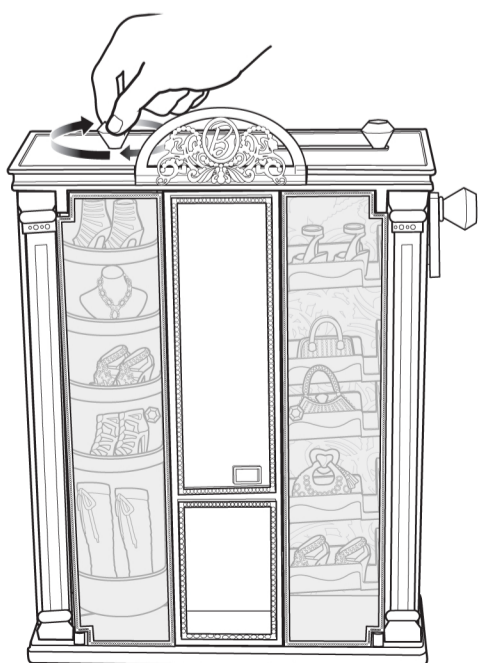
4

1

1. Place doll accessories onto shelves.  
 • 앞 문양을 뒀, 가운데 부분에 끼워 주시고, 인형 악세서리를 모두 선반에 놓아 주세요.

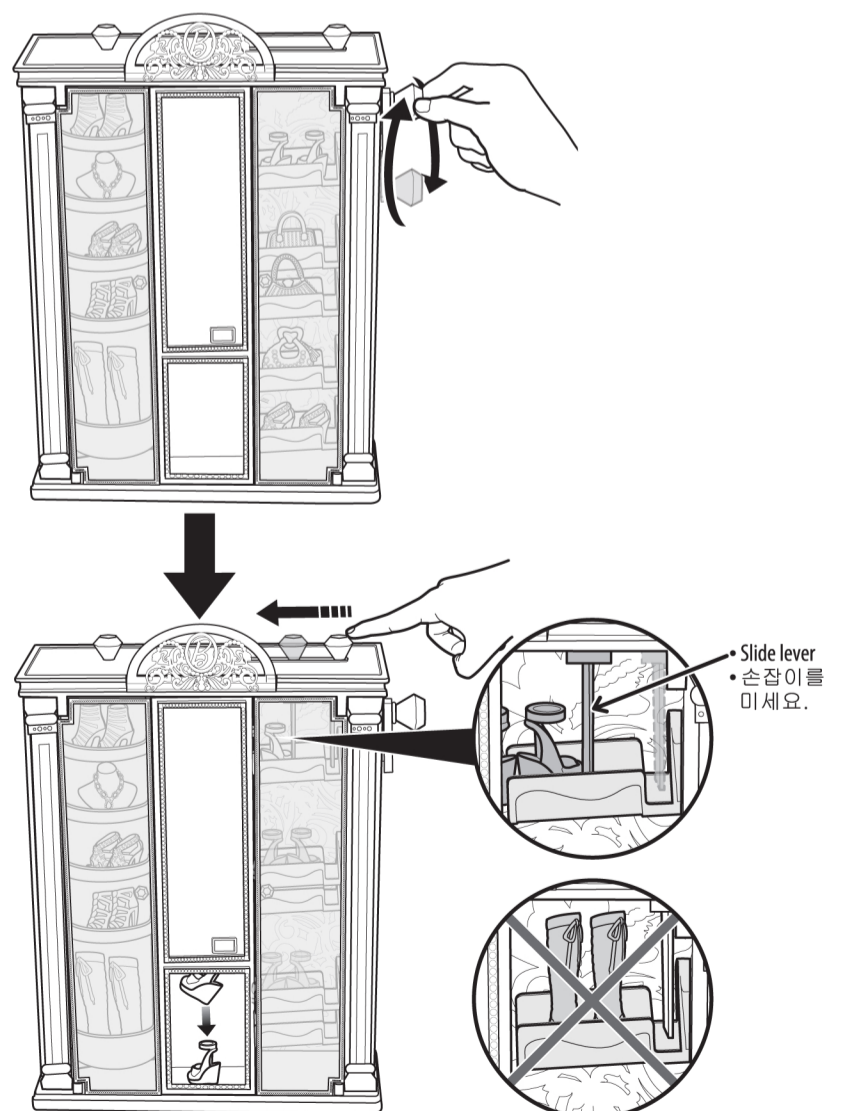


2. Rotate knob to spin racks.  
 • 왼쪽 상단의 손잡이를 돌리세요.



2

3. Turn crank on side to move your desired accessory to the top position and align with the slide lever. Then slide knob on top to push accessory into the chute to dispense.  
 • 오른쪽 옆에 손잡이를 돌려 꺼내고 싶은 악세서리가 가장 위에 위치하도록 한 후 오른쪽 위에 위치한 손잡이를 왼쪽으로 밀면 원하는 악세서리가 아래 구멍으로 나옵니다.



Slide lever  
 • 손잡이를  
 미세요.

3