

Wash design off with warm water and soap (not included) for best removal. Water toys sometimes get messy, protect play surfaces before use. Drain/rinse/clean/dry all items thoroughly before storing. Note: Hair design for use on doll only, not intended for use on child.

### CONSUMER INFORMATION

Need Assistance? Visit [service.mattel.com](http://service.mattel.com) or call 1-800-524-8697 (US and Canada only).

[SERVICE.MATTEL.COM](http://SERVICE.MATTEL.COM)

Mattel, Inc., 636 Girard Avenue, East Aurora, NY 14052, U.S.A. Consumer Relations 1-800-524-8697.  
 Mattel U.K. Ltd., Vanwall Business Park, Maidenhead SL6 4UB. Helpline 01628 500303.  
 Mattel Australia Pty., Ltd., Richmond, Victoria. 3121. Consumer Advisory Service - 1300 135 312.  
 Mattel East Asia Ltd., Room 503-09, North Tower, World Finance Centre, Harbour City, Tsimshatsui, HK, China.  
 Diimport & Diedarkan Oleh: Mattel SEA Ptd Ltd.(993532-P) Lot 13.5, 13th Floor, Menara Lien Hoe, Persiaran Tropicana Golf Country Resort, 47410 PJ. Malaysia. Tel:03-78803817, Fax:03-78803867.

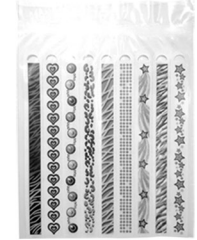
Barbie®

## INSTRUCTIONS

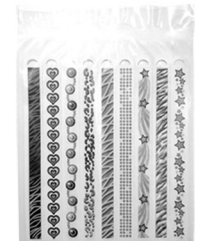


BDB19-0920  
BDB20

5+



BDB19

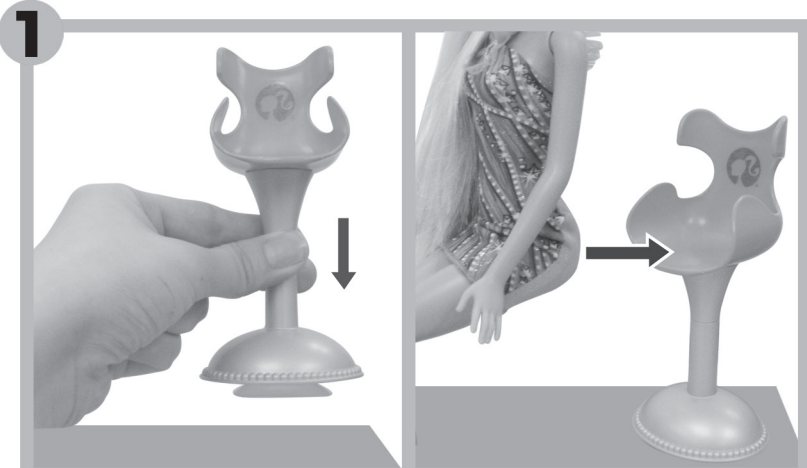


BDB20

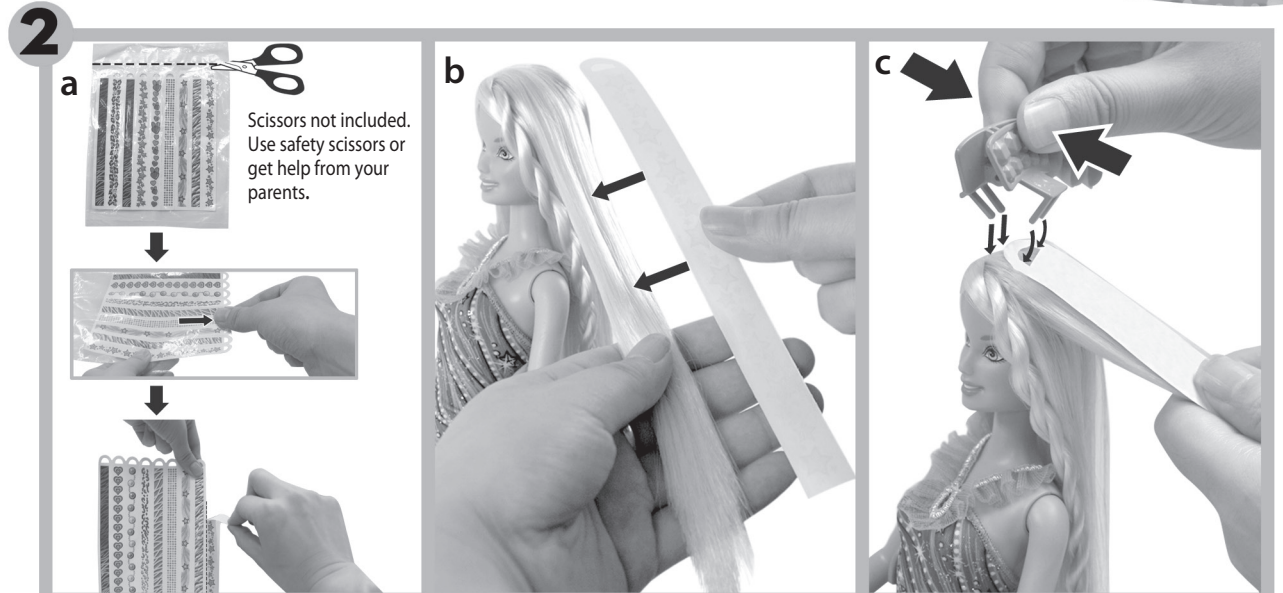
Dolls cannot stand alone. Each sold separately, subject to availability.

Contents: Please remove everything from the package and compare to the contents shown here. If any items are missing, please contact your local Mattel office. Keep these instructions for future reference as they contain important information.



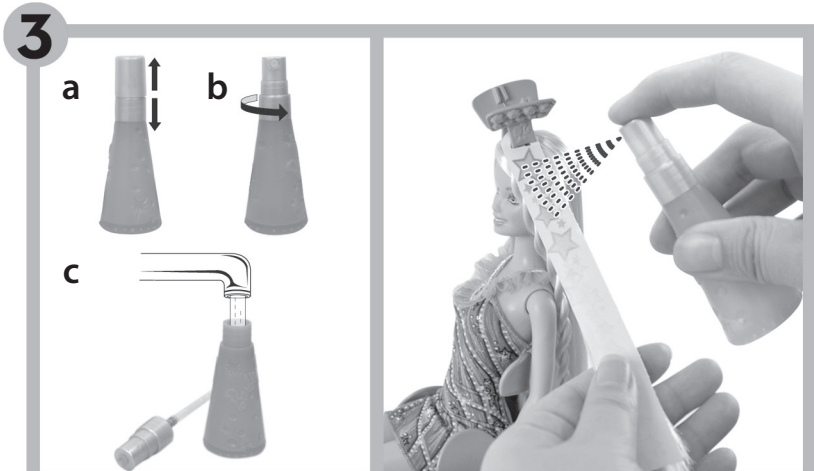


For best results, firmly attach suction cup to any smooth, flat surface.

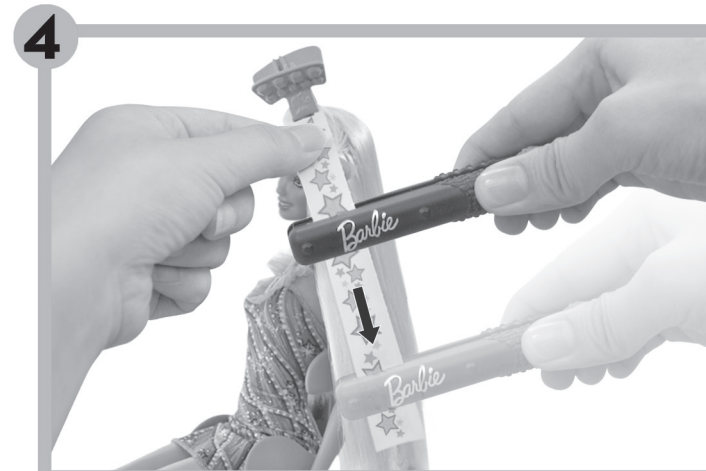


Scissors not included. Use safety scissors or get help from your parents.

Fix one strip of hair design on doll's hair with claw clip as shown.



Spray cold water on design strip. Keep spray bottle 3 inches away from design. For best results, wet design strip generously. Wait until designs show on the back of strip. Spray additional water on areas that do not show the designs.



For best results, support the top part of strip with fingers, press the iron firmly and slowly glide the iron along the design strip. Wait 10 seconds before removing design strip.

