

# Barbie AIRBRUSH DESIGNER

MATTEL®  
CLD91

## INSTRUCTIONS

6+

## CONTENTS

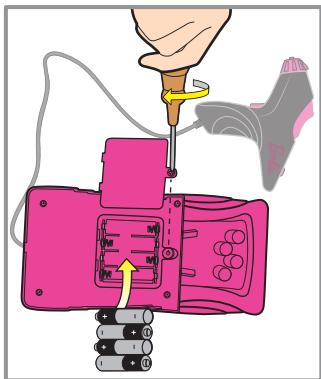


Please remove everything from the package and compare to the contents shown here. If any items are missing, please contact your local Mattel office. Keep these instructions for future reference as they contain important information.

The product may stain fabrics and other surfaces. Avoid contact with carpet, clothing, walls and furniture. Protect play area before use.

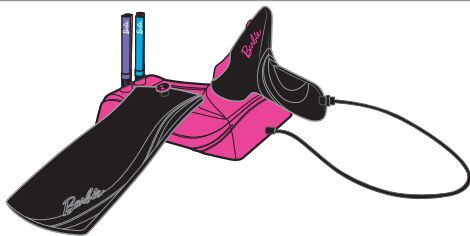
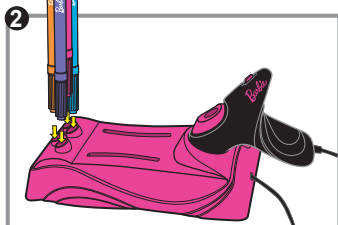
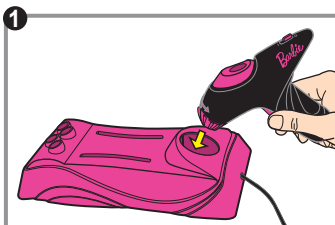
Requires 4 AA(LR6) alkaline batteries (not included).

# BATTERY INSTALLATION



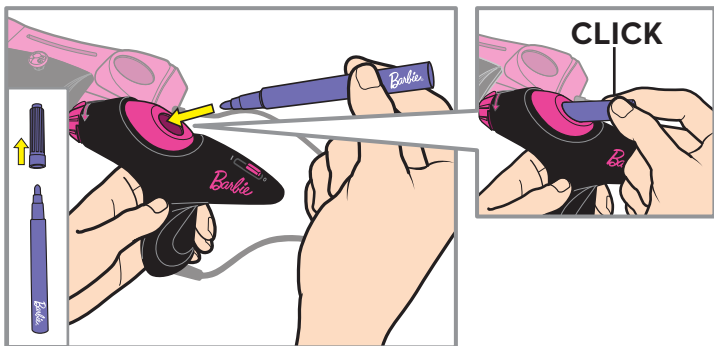
- Unscrew the battery cover with a Phillips head screwdriver (not included).
- Install 4 AA alkaline batteries (not included) in the orientation (+/-) as shown.
- Replace battery cover and tighten screws.
- When exposed to an electrostatic source, the product may malfunction. To resume normal operation, remove and re-install the batteries.

# ASSEMBLY

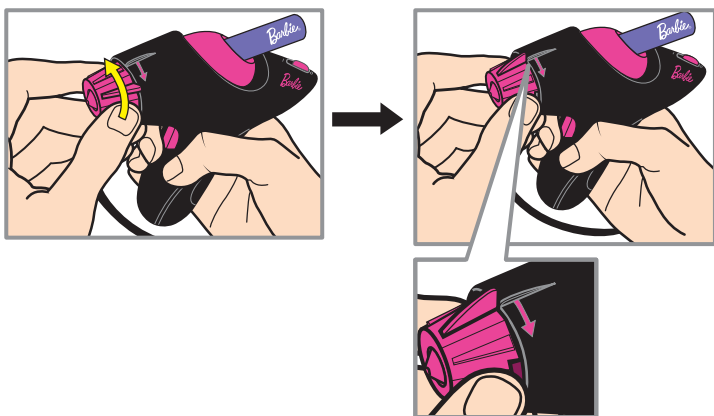


# SETUP

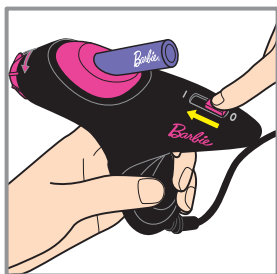
- 1 Remove cap. Insert pen into the airbrush until it **clicks** into place.



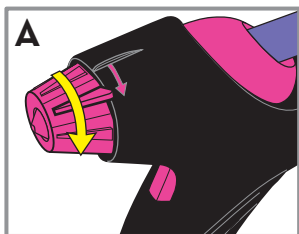
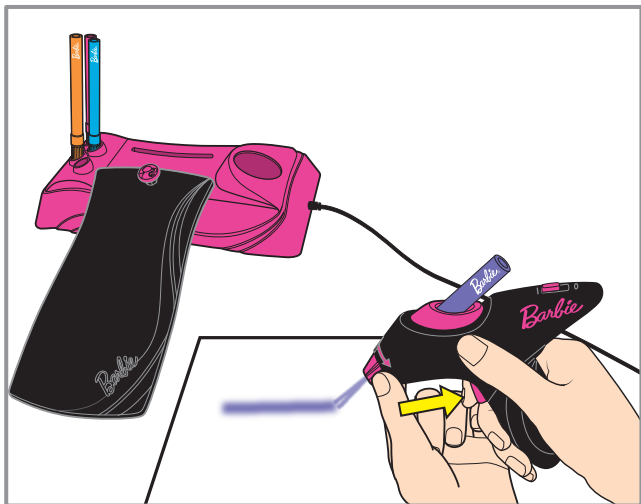
- 2 Align dial to **start position**.



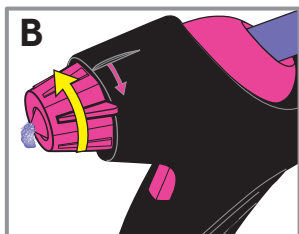
- 3 Turn power switch **ON (I)**.



- 4 Use a piece of paper (not included) to test the spray. Pull trigger and spray ink between 0.25 and 0.5 inches (0.6cm to 1.3cm) from paper. Adjust the dial one click at a time until the spray is visible.



If little or no ink comes out, turn dial one click in the direction of the arrow on the airbrush and test the spray again. Repeat until spray is visible.



If ink foams at the tip, turn dial one click back towards the **starting position**. Clean any foam with a disposable cloth (not included) and test spray again. Repeat until spray no longer foams.

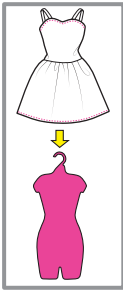
## Note:

You must re-adjust the dial every time a pen is loaded.

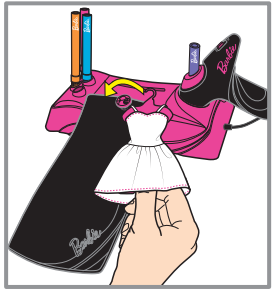
To prevent ink from drying, recap pens after use and replace in holder, cap side down.

# DESIGN

- 1 Apply a fashion to the dress form.



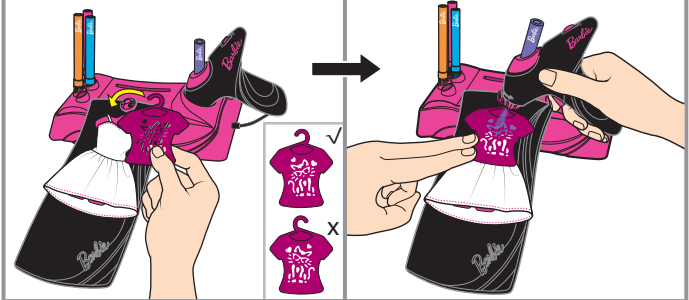
- 2 Hang dress form on the craft station.



3

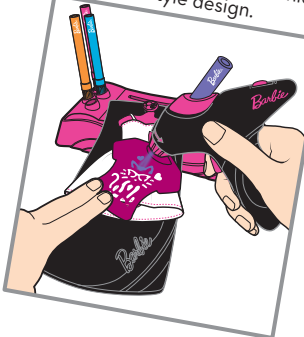
Hang stencil over the fashion.

Hold airbrush between 0.25 and 0.5 inches (0.6cm to 1.3cm) away from fashion, then pull trigger to spray.



OR

Place stencil over the fashion for a freestyle design.



Spray without a stencil.



- 4 Wash and dry fashion, then design again.

# CLEAN UP

- For best results wash fashions in warm water with soap (not included). To avoid burns do not use water that is too hot, above 120°F (49°C).
- Wipe the plastic pieces clean with a damp cloth (not included).
- Do not immerse the airbrush and markers in water.
- The fashions and stencils provided are reusable and washable.
- Rinse, clean and dry all items thoroughly before storing.

# TIPS

- While spraying, point nozzle straight down so it is perpendicular to the fashion.
- Be careful not to spray into your face or the face of others.
- Keep nozzle clean by wiping occasionally during use or when there is ink build-up.
- Always keep pens stored cap side down in holder.
- Only use the supplied pens and fashions. Pens are made to apply to included washable fabric fashions only.
- For more information go online: [www.Barbie.com/ToyTips](http://www.Barbie.com/ToyTips)

# TROUBLESHOOTING

If you have difficulty getting the airbrush to spray:

- **Ensure the dial is properly adjusted. See SETUP, Step 4.**
- Check that the marker has not run-out or dry.
- Check that the marker is clicked into place.
- Ensure the airbrush nozzle is clear.
- Replace the batteries.

## BATTERY SAFETY INFORMATION

In exceptional circumstances batteries may leak fluids that can cause a chemical burn injury or ruin your product. To avoid battery leakage:

- Non-rechargeable batteries are not to be recharged.
- Rechargeable batteries are to be removed from the product before being charged.
- Rechargeable batteries are only to be charged under adult supervision.
- Do not mix alkaline, standard (carbon-zinc), or rechargeable (nickel-cadmium) batteries.
- Do not mix old and new batteries.
- Only batteries of the same or equivalent type as recommended are to be used.
- Batteries are to be inserted with the correct polarity.
- Exhausted batteries are to be removed from the product.
- The supply terminals are not to be short-circuited.
- Dispose of battery(ies) safely.
- Do not dispose of this product in a fire. The batteries inside may explode or leak.



Protect the environment by not disposing of this product with household waste [2002/96/EC]. Check your local authority for recycling advice and facilities.

CLD91-0970-1100387811-DOM

## CONSUMER INFORMATION

Need Assistance? Visit [service.mattel.com](http://service.mattel.com) or call 1-800-524-8697 (US and Canada only).

[SERVICE.MATTEL.COM](http://SERVICE.MATTEL.COM)

Mattel, Inc., 636 Girard Avenue,  
East Aurora, NY 14052, U.S.A.  
Consumer Services  
1-800-524-8697.  
Mattel U.K. Ltd., Vanwall  
Business Park, Maidenhead SL6  
4UB. Helpline 01628 500303.

Mattel Australia Pty., Ltd., Richmond, Victoria. 3121. Consumer Advisory Service - 1300 135 312. Mattel East Asia Ltd., Room 503-09, North Tower, World Finance Centre, Harbour City, Tsimshatsui, HK, China. Tel.: (852) 3185-6500. Diimport & Diedarkan Oleh: Mattel Southeast Asia Pte. Ltd., No 19-1, Tower 3 Avenue 7, Bangsar South City, No 8, Jalan Kerinchi, 59200 Kuala Lumpur, Malaysia. Tel: 03-78803817, Fax: 03-78803867.