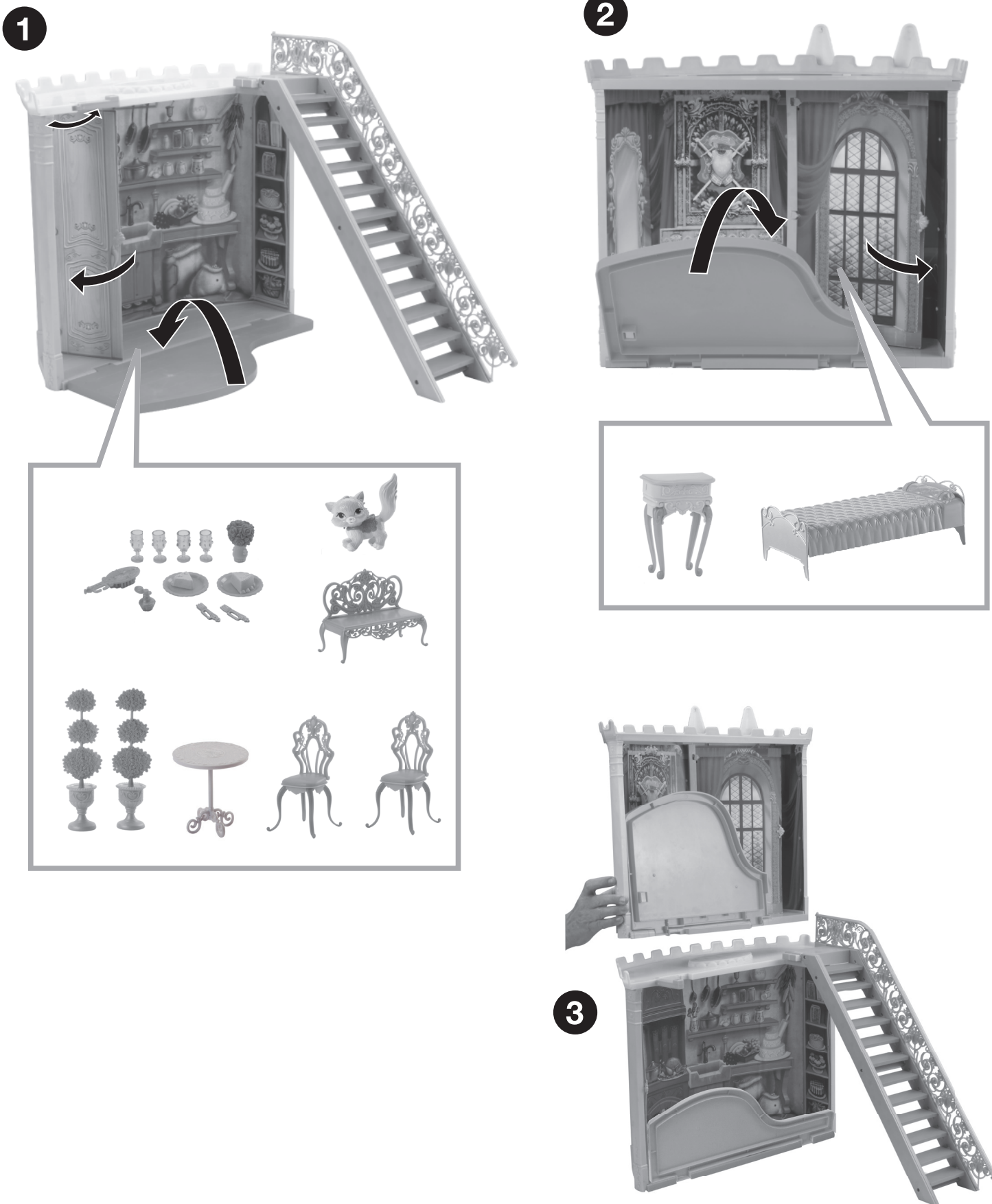


Storage



90 - DAY LIMITED WARRANTY

Mattel Sales Corp./Mattel Direct Import, Inc. warrants to the original consumer purchaser that the product with 90-day warranty statement printed on the outside of the box, will be free of defects in material or workmanship for 90 days (unless specified in alternate warranties) from the date of purchase. If defective, call us at 800-524-8697, visit our website at www.service.mattel.com or write to us at Consumer Relations, 636 Girard Avenue, East Aurora, New York 14052, for replacement or refund at our option.

This warranty does not cover damage resulting from unauthorized modification, accident, misuse or abuse. In no event shall we be responsible for incidental, consequential, or contingent damages (except in those states that do not allow this exclusion or limitation). This warranty gives you specific legal rights and you may also have other rights which vary from state to state. Some states do not allow the exclusion of incidental or consequential damages, so the above exclusions or limitations may not apply to you.

Valid only in U.S.A.

For U.S.A. market only:
 We want you to have fun playing with our products.
 Please give us your feedback by filling out the short on-line survey. Go to :
service.mattel.com/surveys
 Thanks for helping us make great toys even better!

English-only site.

CONSUMER INFORMATION

Need Assistance? Visit service.mattel.com or call 1-800-524-8697 (US and Canada only), M-F 9AM - 7PM & SAT 11AM - 5PM, Eastern.

SERVICE.MATTEL.COM

Mattel Canada Inc., Mississauga, Ontario L5R 3W2. You may call us free at 1-800-524-8697.
 Mattel U.K. Ltd., Vanwall Business Park, Maidenhead SL6 4UB, Helpline 01628 500303.
 Mattel Australia Pty., Ltd., Richmond, Victoria. 3121. Consumer Advisory Service - 1300 135 312.
 Mattel East Asia Ltd., Room 1106, South Tower, World Finance Centre, Harbour City, Tsimshatsui, HK, China.
 Diimport & Diedarkan Oleh: Mattel SEA Ptd Ltd.(993532-P) Lot 13.5, 13th Floor, Menara Lien Hoe, Persiaran Tropicana Golf Country Resort, 47410 P.J. Tel:03-78803817, Fax:03-78803867.
 Mattel, Inc. 636 Girard Avenue, East Aurora, NY 14052. U.S.A. Consumer Relations 1-800-524-8697.

3+

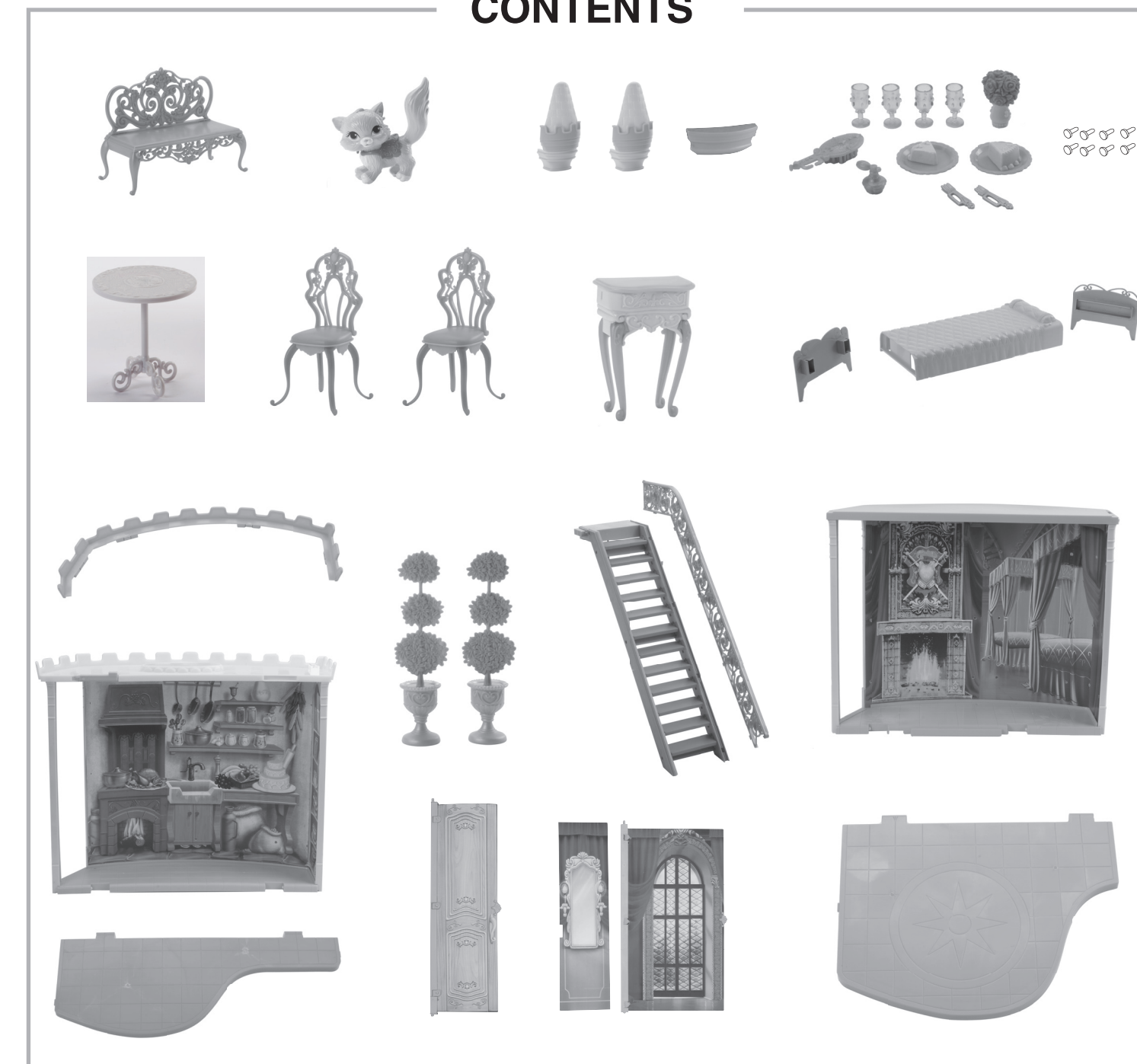
Barbie

INSTRUCTIONS

R0829-0920



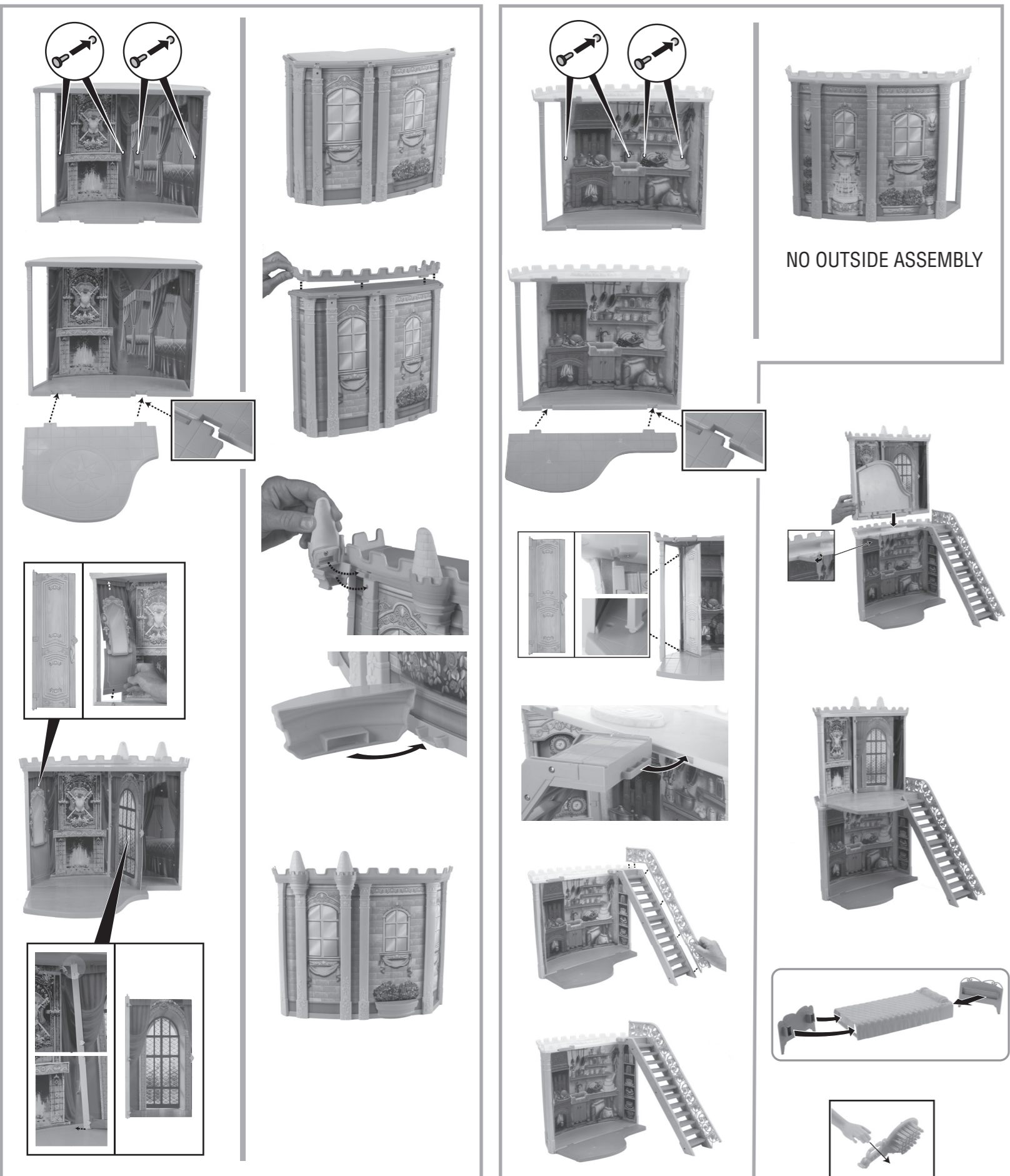
CONTENTS



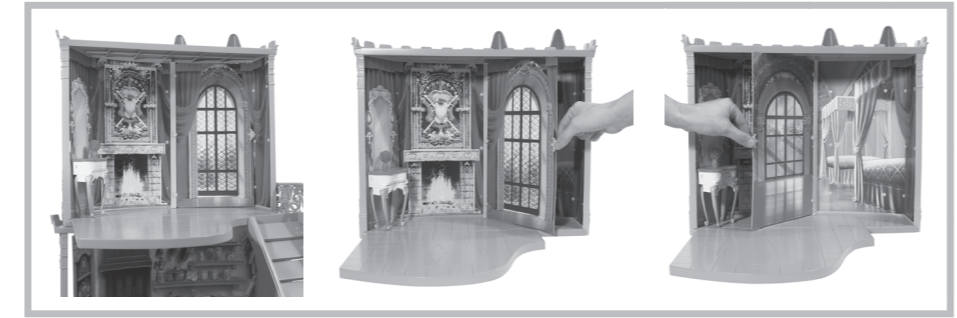
Please remove everything from the package and compare to the contents shown here.
 If any items are missing, please contact your local Mattel office.
 Keep these instructions for future reference as they contain important information.



Assembly



2 ways to play...1 level or 2



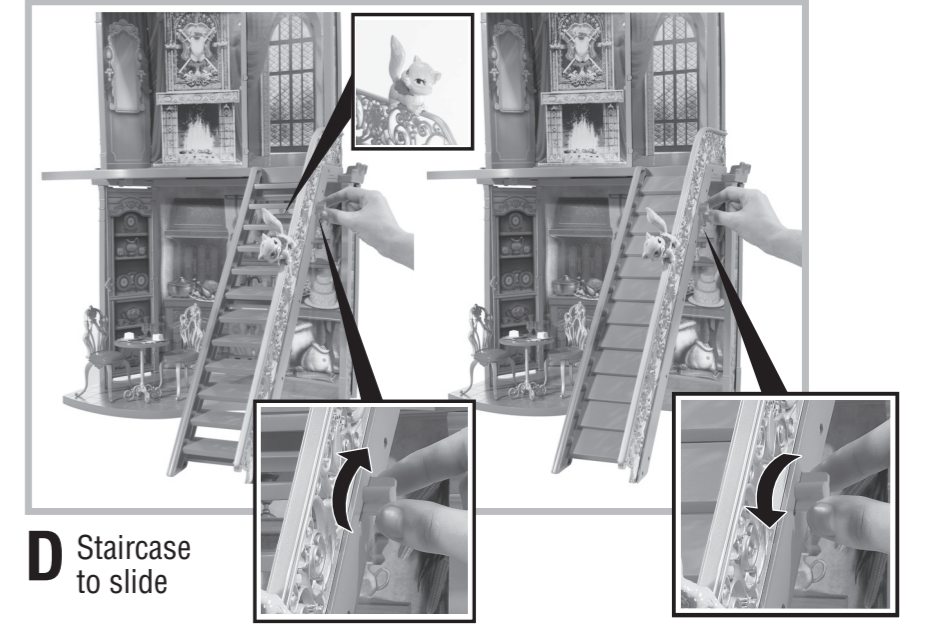
A Ballroom to bedroom



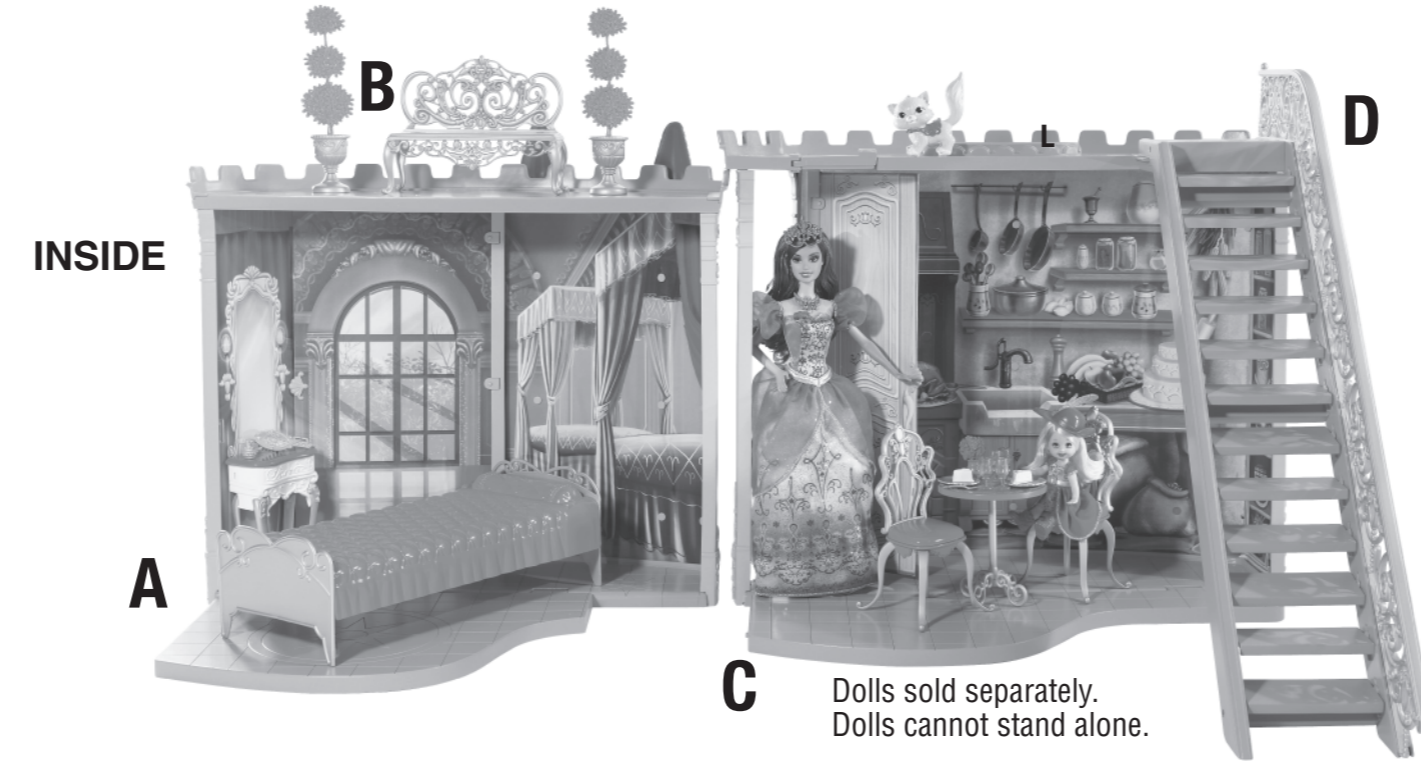
B Patio



C Secret door

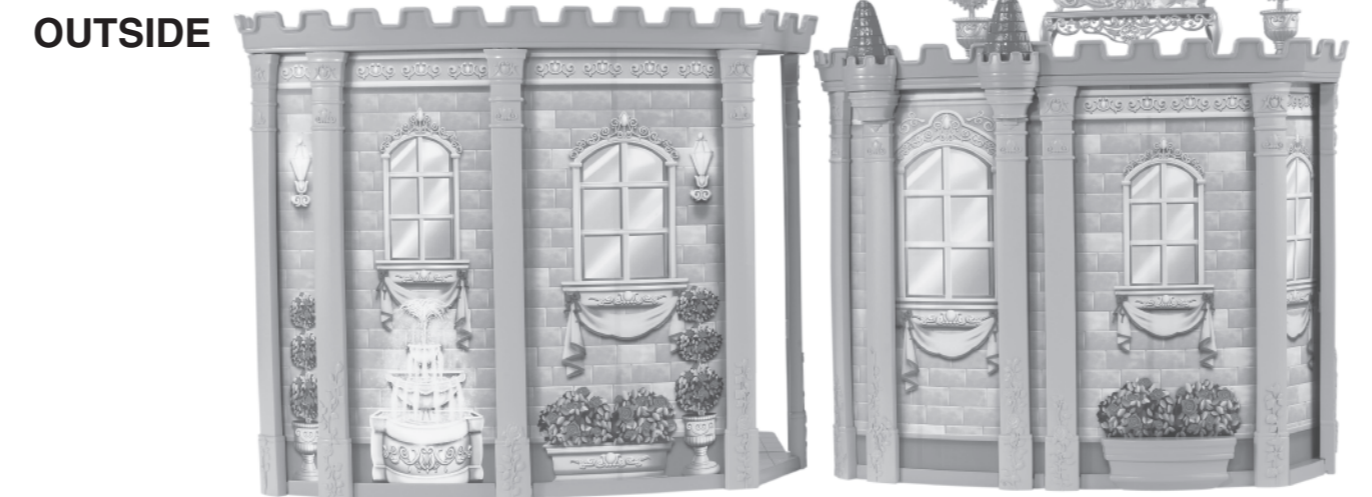


D Staircase to slide

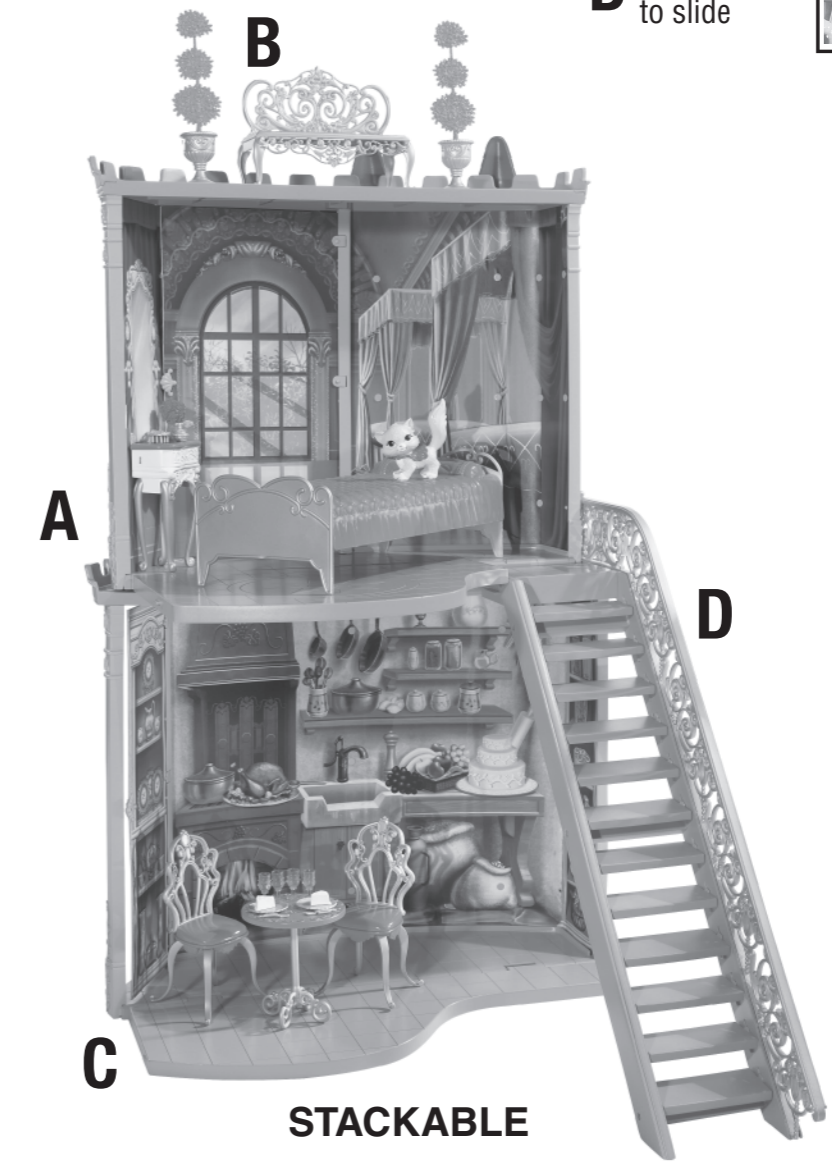


INSIDE

C Dolls sold separately. Dolls cannot stand alone.



OUTSIDE



A

C

STACKABLE

